

Appendix A

Central Bedfordshire ASB Incidents reported to Bedfordshire Police ranked by ward 01/04/2013 – 31/08/2013

	Apr 13	May 13	Jun 13	Jul 13	Aug 13	Total
Houghton Hall	62	56	69	72	102	361
Tithe Farm	30	40	61	87	38	256
Dunstable Northfields	51	48	42	43	39	223
Leighton Buzzard South	44	37	42	51	32	206
Parkside	53	39	41	31	28	192
Dunstable Central	28	26	36	52	42	184
Leighton Buzzard North	30	23	21	32	39	145
Sandy	18	19	35	32	38	142
Arlesey	27	13	16	37	40	133
Caddington	17	13	11	31	40	112
Biggleswade South	16	17	21	34	22	110
Dunstable Manshead	17	21	24	27	19	108
Dunstable Icknield	22	16	22	22	23	105
Toddington	20	11	28	25	20	104
Flitwick	18	26	12	23	24	103
Shefford	17	16	11	19	29	92
Amphill	15	13	13	36	13	90
Stotfold & Langford	16	14	21	20	13	84
Dunstable Watling	15	9	23	14	15	76
Linslade	14	13	14	15	14	70
Cranfield & Marston	14	8	8	15	20	65
Eaton Bray	10	11	13	8	9	51
Biggleswade North	6	8	6	16	9	45
Heath & Reach	7	11	5	10	6	39
Barton Le Clay	7	4	6	7	13	37
Potton	6	5	7	8	6	32
Northill	3	8	7	7	2	27
Silsoe & Shillington	7	5	5	2	5	24
Aspley & Woburn	2	6	3	7	6	24

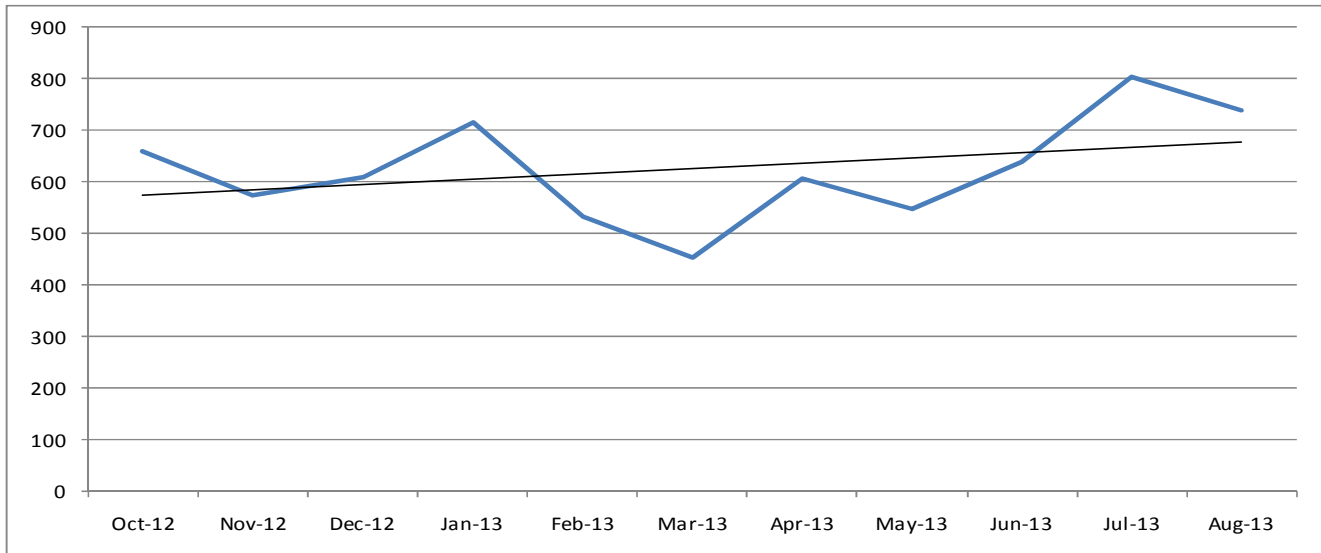
Westoning, Flitton & Greenfield	2	2	1	3	8	16
Houghton Conquest & Haynes	1	4	2	4	4	15
Unknown	12	5	13	15	20	65
Totals	607	547	639	805	738	3336

The above data has been provided by Bedfordshire Police, the data has been broken down by ward using the "location postcode" data which has been cross referred against Central Bedfordshire Council's Postcode List (January 2011).

65 incidents between 01/04/2013 – 31/08/2013 are shown as "Unknown" as no postcode data has been provided and these are unable to be accurately allocated to a ward.

Appendix B

Central Bedfordshire ASB Incidents reported to Bedfordshire Police between 1st October 2012 to 31 August 2013 inclusive by Month



Month	Oct 12	Nov 12	Dec 12	Jan 13	Feb 13	Mar 13	Apr 13	May 13	Jun 13	Jul 13	Aug 13	TOTAL
No	660	573	610	717	533	453	607	547	639	805	738	6882